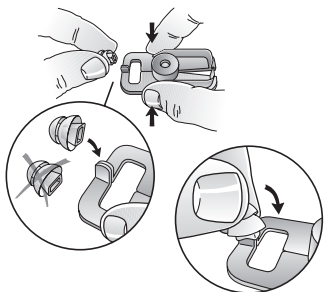


Attaching A Power Dome to a High Power Receiver

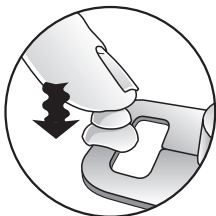
1



Use one hand to bring together the prongs of the attachment tool. Use the other hand to align the double ear bud with the prongs of the tool.

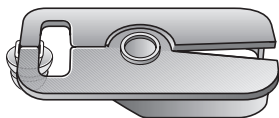
Push the double ear bud onto the prongs of the tool.

2



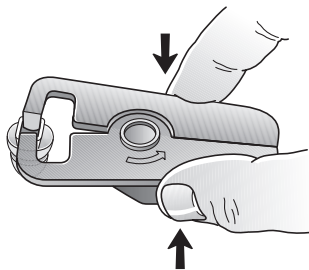
Work the double ear bud until the prongs of the tool are fully inserted into the stem of the ear bud.

3



With the double ear bud securely attached to the tool, turn the tool over onto a flat surface.

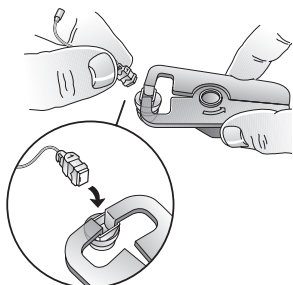
4



While the tool is on a flat surface, squeeze the opposite end of the tool. This will spread the prongs of the tool, as well as the opening of the double ear bud. Placing your index finger on the top of the tool may assist in keeping the tool steady.

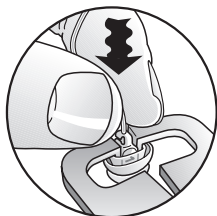
Attaching A Power Dome to a High Power Receiver

5



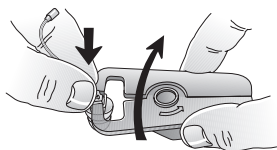
Insert the receiver into the double ear bud.

6

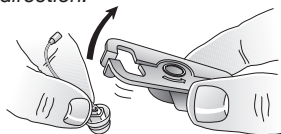


While pushing in a downward direction, wiggle the receiver until it is fully inserted.

7

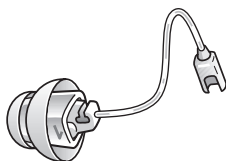


To remove the tool, use one hand to hold the receiver in place while using the other hand to pull the tool in an upward direction.



The receiver should remain in the double ear bud once the tool has been removed.

8



Once the double ear bud is properly attached to the receiver, the stem of the ear bud should overlap the receiver size that is stamped on the receiver housing.