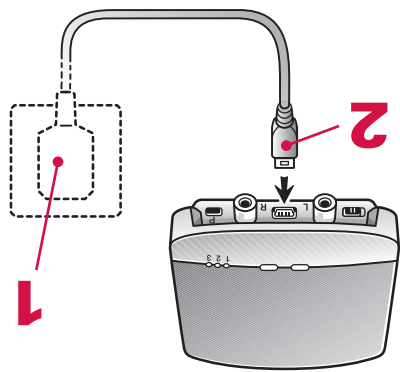


Depending upon the features of your particular audio device, choose one of the following procedures to set up your ReSound Unite TV.

**1.** Plug the power cord for the ReSound Unite TV into an electric wall outlet.

**2.** Insert the other end of the power cord into the Mini-USB socket on the ReSound Unite TV.

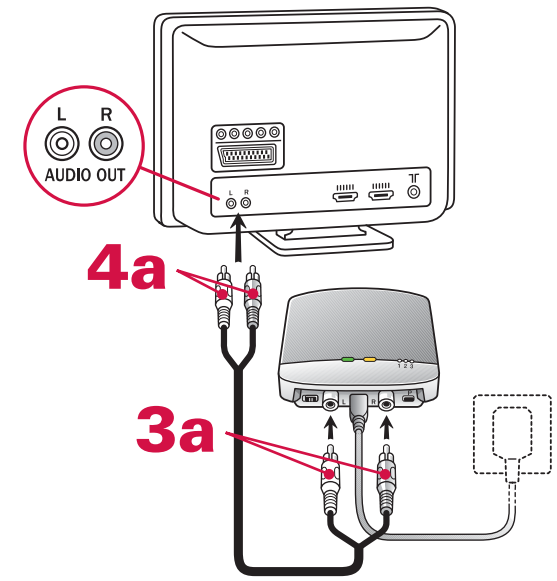


## SETTING UP YOUR RE SOUND UNITE™ TV

NOTE: Please consult the ReSound Unite™ TV User Guide for additional information.

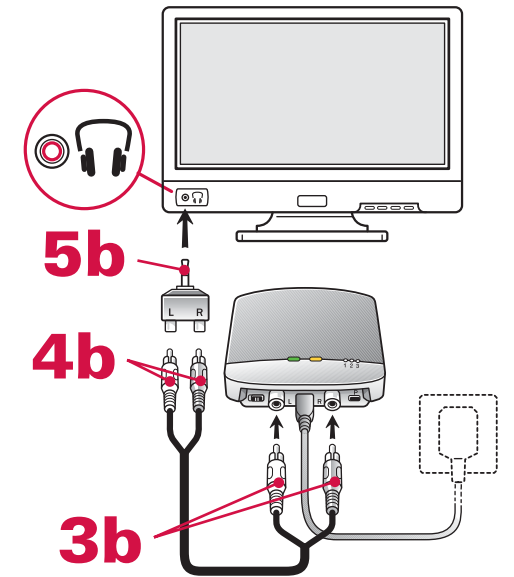
### USING AN AUDIO CABLE

- 3a.** Insert the red and white plugs of the audio cable into the red and white sockets on the ReSound Unite TV.
- 4a.** Insert the plugs at the other end of the red and white audio cable into the “AUDIO OUT” sockets on the TV, sound system or computer.



### USING A HEADPHONE JACK ADAPTER

- 3b.** Insert the red and white plugs of the audio cable into the red and white sockets on the ReSound Unite TV.
- 4b.** Insert the plugs at the other end of the red and white audio cable into the sockets on the headphone jack adapter.
- 5b.** Plug the headphone jack adapter into the headphone socket on the TV, sound system or computer.



### USING A DIGITAL TO ANALOG AUDIO CONVERTER

Should there only be a digital port in your TV, you will need a “digital to analog audio converter” and a Toslink optical or coaxial cable to connect the ReSound Unite TV to your TV. Consult your TV technician for these items.

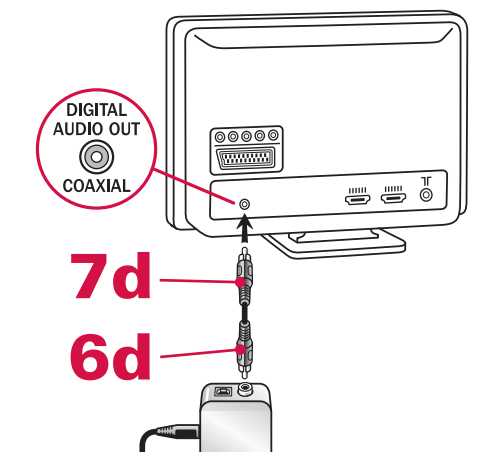
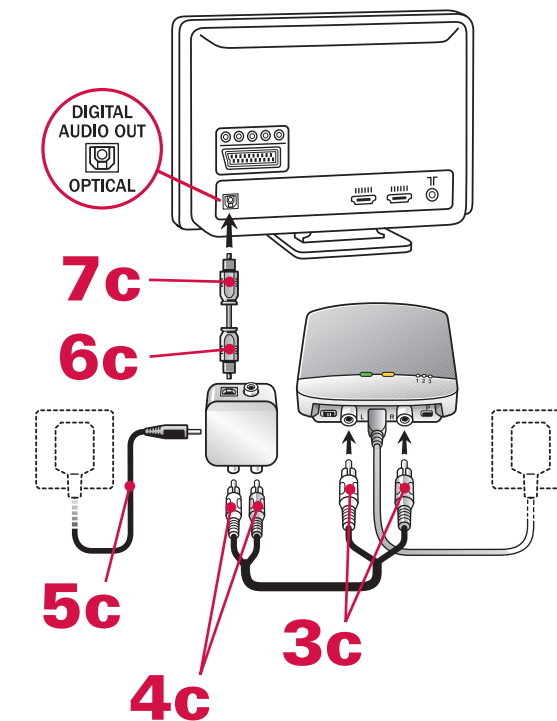
- 3c.** Insert the red and white plugs of the audio cable into the red and white sockets on the ReSound Unite TV.
- 4c.** Insert the plugs at the other end of the red and white audio cable into the sockets on the digital to analog audio converter.
- 5c.** Connect the converter’s power supply to the converter and plug it into an electric wall outlet.

For the Toslink optical cable:

- 6c.** Plug one end of the Toslink optical cable into the converter.
- 7c.** Plug the other end of the Toslink optical cable into the digital audio output port on the TV.

For the coaxial cable:

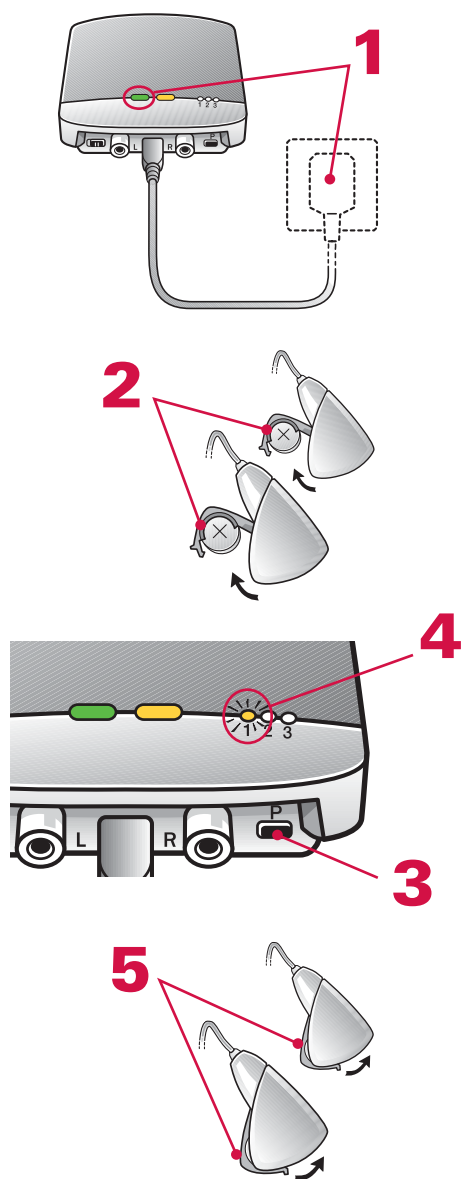
- 6d.** Plug one end of the coaxial cable into the converter.
- 7d.** Plug the other end of the coaxial cable into the digital audio output port on the TV.



## B PAIRING TO YOUR HEARING INSTRUMENTS

*NOTE!* Check with your hearing healthcare professional to determine if your instruments have been pre-paired. Instruments that have been pre-paired do not need to be paired again.

1. Make sure the ReSound Unite TV is plugged into a wall socket and that the green power light is on.
2. Your hearing instruments must be turned off with the battery doors opened.
3. Press the pairing button on the ReSound Unite TV once to activate the pairing mode.
4. You can tell that the pairing mode has been activated when channel indicator light #1 is flashing. Pairing mode will be activated for 30 seconds.
5. While the channel indicator light is flashing, close the battery doors of both hearing instruments.
6. Successful pairing will be indicated by an audible melody played in both hearing instruments. You are now ready to use the ReSound Unite TV!



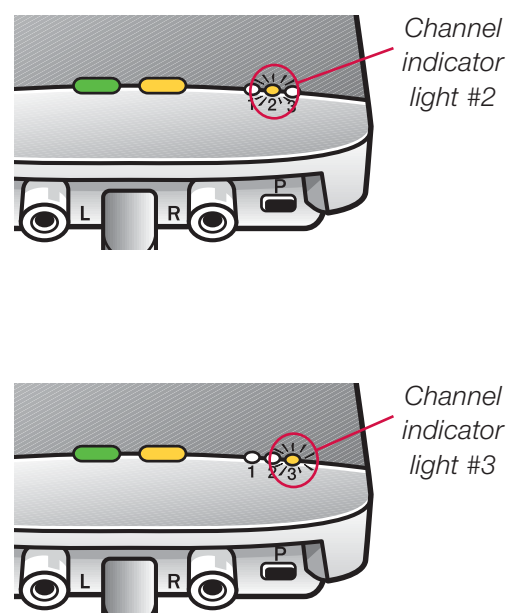
## PAIRING TO A SECOND OR THIRD RESOUND UNITE TV

It is possible to pair up to three ReSound Unite TV units with a given pair of hearing instruments.

To pair a second ReSound Unite TV:

- Follow steps 1 and 2 above.
- Then press the pairing button of the second ReSound Unite TV **TWO** times.
- Channel indicator light #2 will begin flashing.
- Finish the second pairing by closing the battery doors on the hearing instruments.

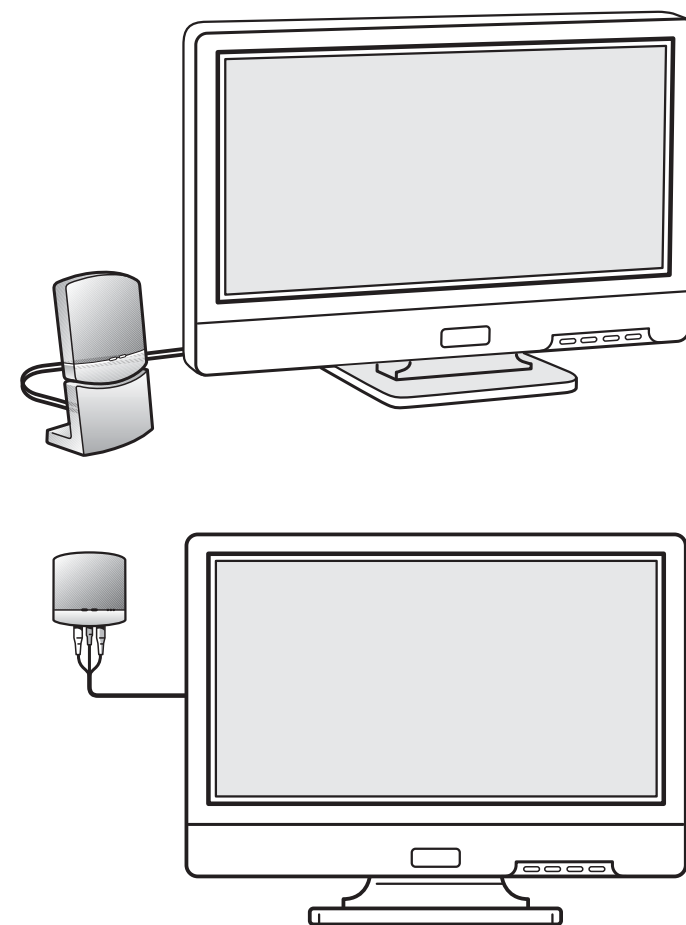
A third ReSound Unite TV unit can be similarly paired by pressing the pairing button **THREE** times and completing the procedure as described above.



## C ORIENTING THE RESOUND UNITE™ TV IN A VERTICAL POSITION

Options for vertical positioning:

- Place the ReSound Unite TV in the table stand provided.
- Mount it to the wall with hardware provided.
- Velcro it to the TV.



## D LISTENING TO SOUND FROM YOUR RESOUND UNITE™ TV

After setting up and pairing, you can listen to sound from the ReSound Unite TV as follows.

### TO START LISTENING TO A STREAMER PROGRAM

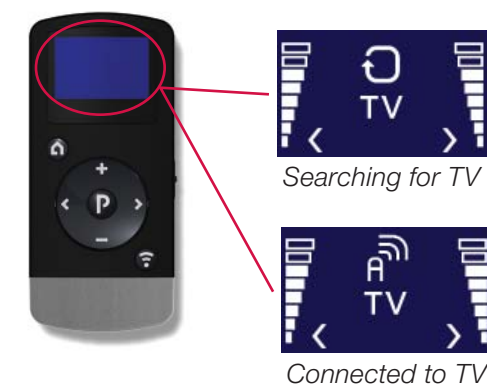
With your TV, sound system or computer turned on ...

- EITHER:** Press and hold the push button on your hearing instrument for 3 seconds;  
**OR:** Press the streamer button on the remote control.



When using the optional remote control, the display will show that it is searching, and then indicate that it is connected to the ReSound Unite TV.

Once you have selected a ReSound Unite TV listening program, a melody of beeps will be heard in your hearing instrument.



### TO STOP LISTENING TO A STREAMER PROGRAM

- EITHER:** Quickly press and release the push button on your hearing instrument;  
**OR:** Press the "P" button on the remote control.