



MANAGING RESOUND UNITE™ ACCESSORIES IN AVENTA 3.0

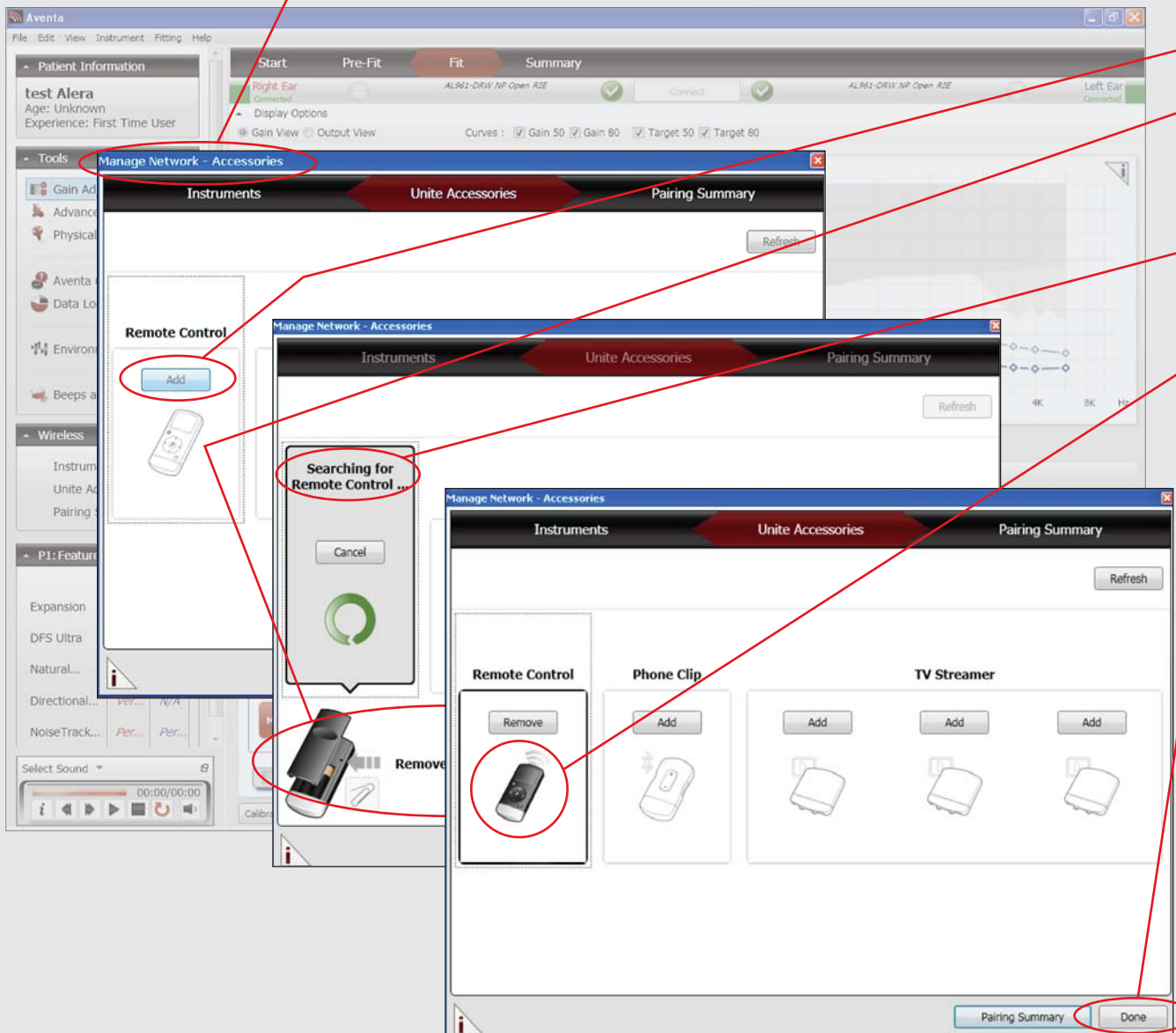
Fit screen

The screenshot shows the Aventa software interface in the 'Fit' screen. The top navigation bar has 'Fit' highlighted. The left sidebar shows 'Instruments' with 'Unite Accessories' selected. The main area displays two frequency response graphs for the right and left ears, showing gain curves and target ranges. Below the graphs are controls for program selection, gain adjustment, and a grid for frequency-specific settings.

1 Add a Remote Control.

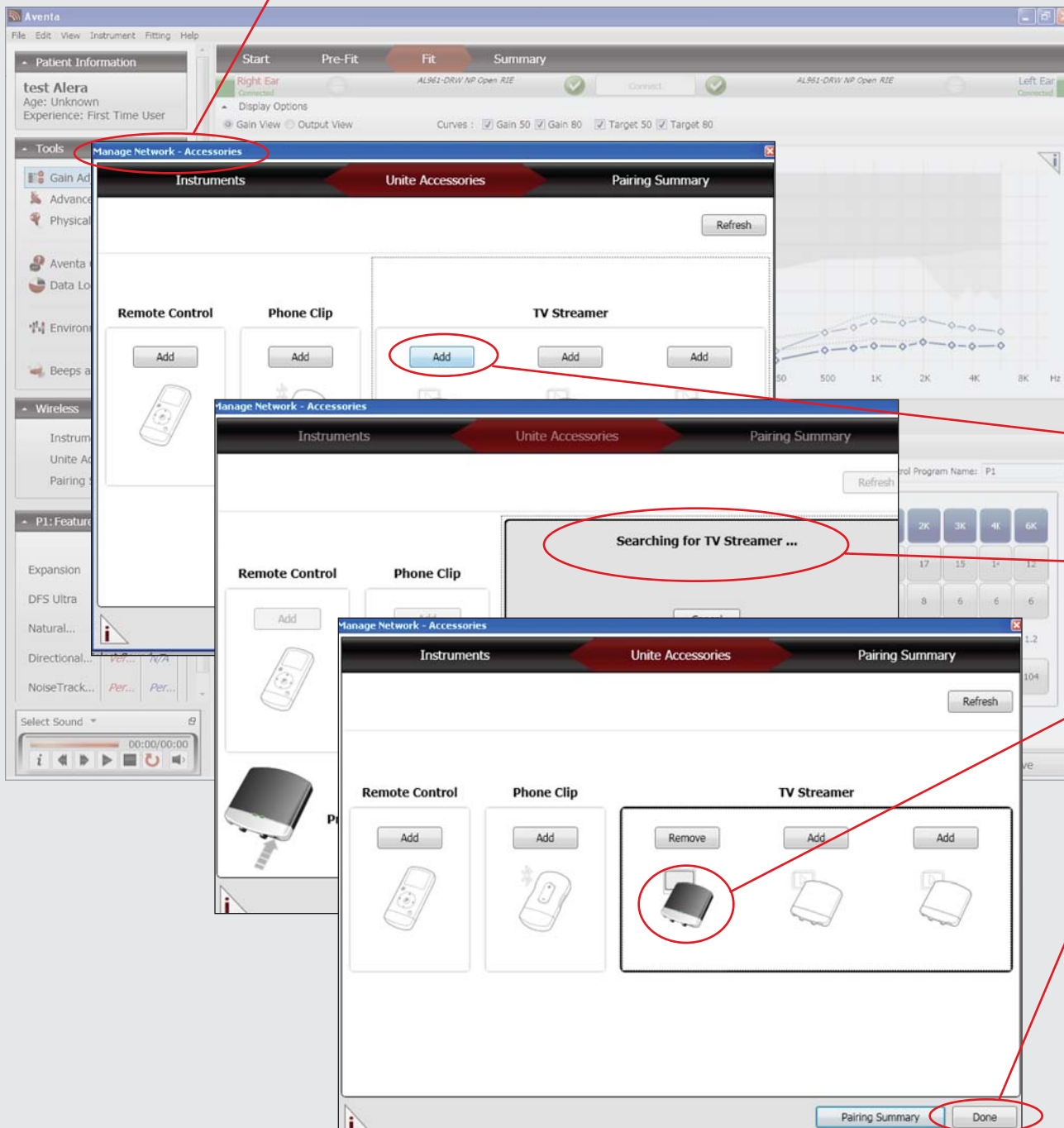
- a. Select “Unite Accessories” from the left navigation bar on the Fit screen. Aventa will display the Manage Network—Accessories window.

Manage Network—Accessories window



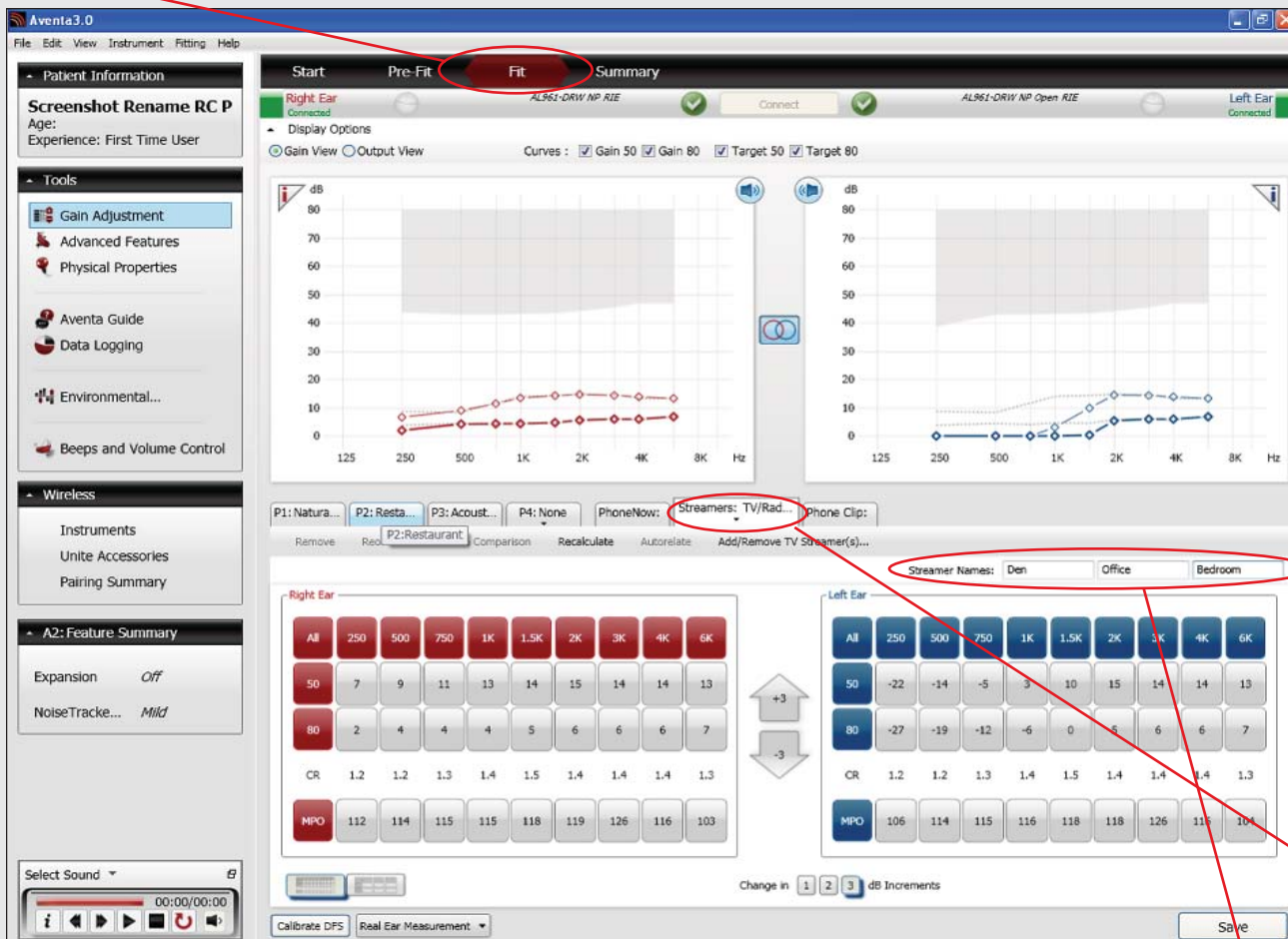
- b. Click “Add” under “Remote Control.”
 - c. Open the battery compartment of the Remote Control and press the red dot (pairing button) with a pen, or similar tool. Refer to the graphic displayed in Aventa.
 - d. ReSound Aventa 3.0 will search for the Remote Control.
 - e. Once the device is found, the hearing instrument will pair with the Remote Control. Pairing is completed when the picture of the Remote Control is displayed.
 - f. Add another accessory or click “Done” to exit this screen.
- 2** Add a Phone Clip (similar to the process of adding a Remote Control).
- a. Select “Unite Accessories” from the left navigation bar (if you are not already in the Manage Network—Accessories window).
 - b. Click “Add” under “Phone Clip.”
 - c. Remove the silver-colored cover from the Phone Clip. Locate and press the pairing button.
 - d. ReSound Aventa 3.0 will search for and pair with the Phone Clip. Pairing is completed when the picture of the Phone Clip is displayed.
 - e. Refer to the user’s manual for the mobile phone for instructions on pairing the Phone Clip with the phone.
 - f. Add another accessory or click “Done” to exit this screen.

Manage Network—Accessories window



- 3 Add Unite TV #1.
 - a. Select “Unite Accessories” from the left navigation bar (if you are not already in the Manage Network—Accessories window).
 - b. Ensure that the Unite TV is powered on (the AC adapter is plugged into the wall socket and connected to the Unite TV).
 - c. Locate the LED lights labeled “1”, “2” and “3” on the front of the Unite TV. Press and release the “P” (pairing) button beside the power and audio jacks on the Unite TV so that the LED light above “1” is illuminated.
 - d. While the LED light on the Unite TV is flashing, click “Add” under “TV streamer” in the software. (Select the left-most “Add” button).
 - e. ReSound Aventa 3.0 will search for the Unite TV.
 - f. When pairing is completed, a picture of the Unite TV will be displayed and the LED on the front of the Unite TV will stop flashing.
 - g. Add another accessory or click “Done” to exit this screen.
- 4 Add Unite TV #2 (similar to the process of adding the first Unite TV—see details above).
 - a. Make sure that the second Unite TV is powered on. Then press and release the “P” (pairing) button on the streamer **TWICE** so that the LED light above “2” is illuminated.
 - b. Under “TV streamer” in the Manage Network—Accessories window, click the middle “Add” button while the LED light on the Unite TV is flashing.

Fit screen



When pairing is completed, a picture of a second Unite TV will be displayed and the LED on the front of the Unite TV will stop flashing.

c. Add another accessory or click “Done” to exit this screen.

5 Add Unite TV #3 (similar to the process of adding the first TV streamer—see details above).

a. Make sure that the third Unite TV is powered on. Then press and release the “P” (pairing) button on the streamer **THREE TIMES** so that the LED light above “3” is illuminated.

b. Under “TV streamer” in the Manage Network—Accessories window, click the right-most “Add” button while the LED light on the Unite TV is flashing. When pairing is completed, a picture of a third Unite TV will be displayed and the LED on the front of the Unite TV will stop flashing.

c. Add another accessory or click “Done” to exit this screen.

6 Rename the TV streamers to reflect the location of each streamer. (Ex: Family Room, Bedroom, Office)

a. Select the “Streamers: TV/Rad..” program tab on the Fit screen.

b. Position your cursor in the appropriate box beside “Streamer Names” and then enter the desired name.

c. Repeat this procedure for each streamer you would like to name.

ReSound North America • 8001 Bloomington Freeway, Bloomington, MN 55420 • 1-800-248-4327
Government Services: 1-800-392-9932 • VAinfo@gnresound.com

ReSound Canada • 303 Supertest Road • Toronto, Ontario M3J 2M4 • 1-888-737-6863

gnresound.com/alera • customerexperience@gnresound.com